

Shrewsbury Pool Consultation Analysis

WHO WAS CONSULTED?



1924 Survey respondents
From 12 postcodes with 91% from around Shrewsbury (SY1-5) - so why is someone from Shifnal making the decision?



55% Female and 42% Male respondents
3% either preferred not to say or were transgender

BUT WHO WAS IGNORED?



539 people who shared a computer had their responses discarded!

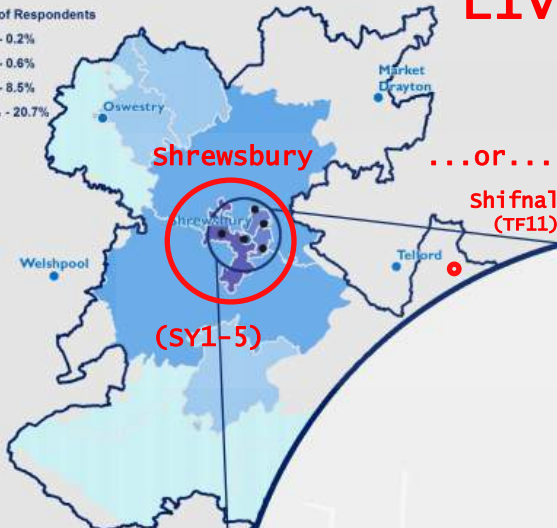
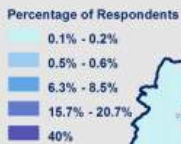


14.3% of respondents are members of a swimming club
57% of respondents swim regularly
Twenty one clubs and thirty two schools also use the pools

Consultations were also undertaken with key stakeholders and groups ...but no notice was taken of suggestions to make Sundorne an additional swimming pool

WHAT DID THEY SAY?

WHERE DOES THE Portfolio Holder LIVE?

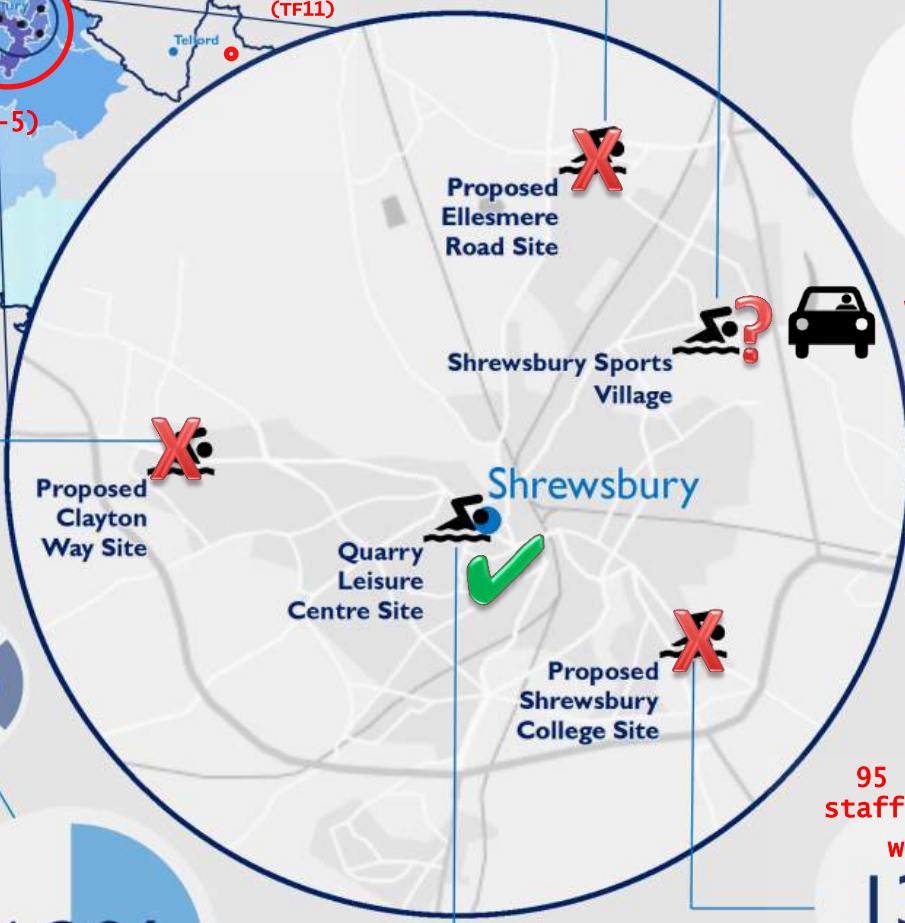


17%

#1 preference
This may be the only recommended option on 13 July
WHY?

✓ Learn to swim facilities and ✓ A varied swimming timetable were identified as the most important factors for facility mix within the leisure centre but they didn't ask how people travel!
Because they know 67% walk, cycle, use a train or bus to the Quarry But 95% drive to Sundorne Sports Village

See maps for travel times to both sites



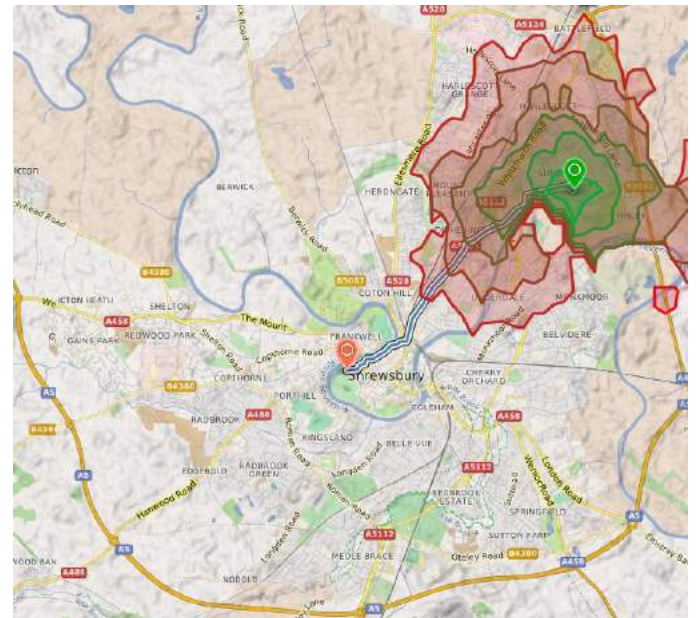
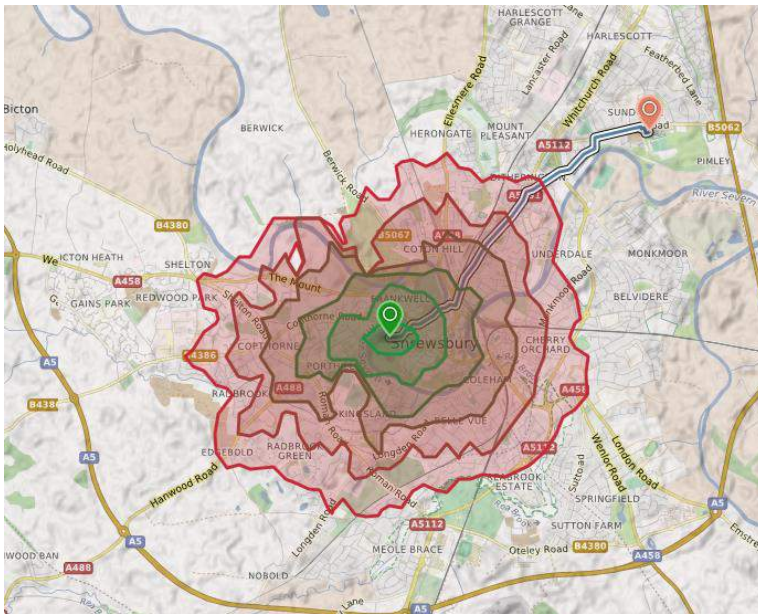
In total 83% want the pool to the South, the West or in the town centre - that's seven out of eight voters

95 Shrewsbury College staff & student replies were **DISCARDED!**

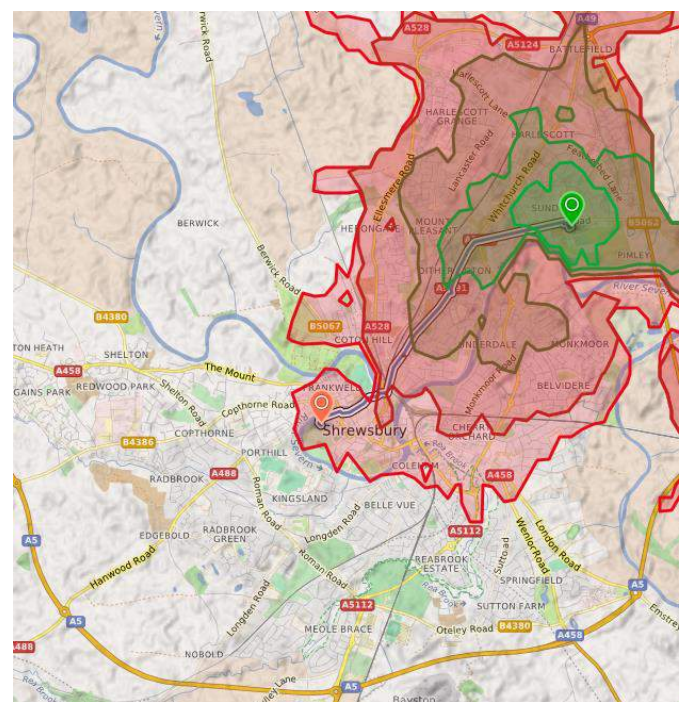
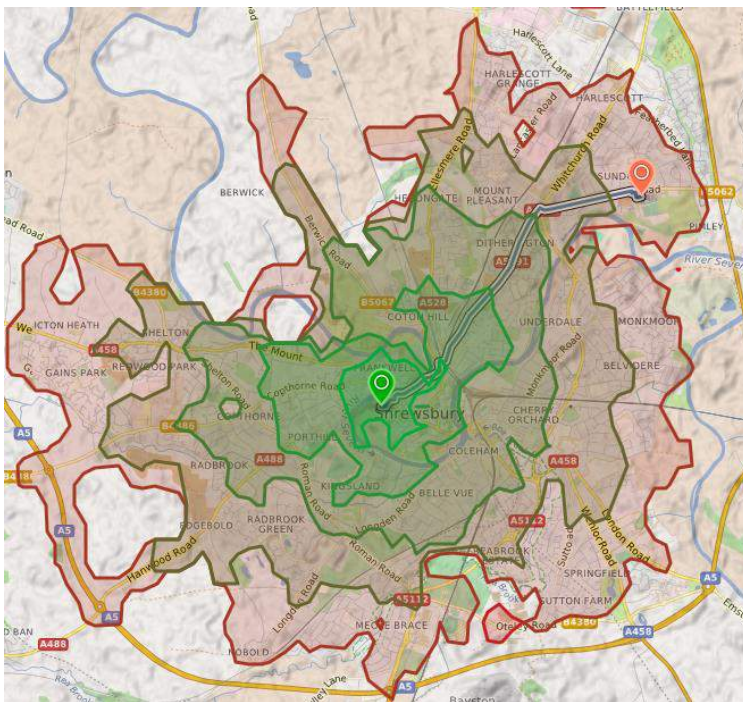


Make Shropshire Council listen

Walking to the Quarry & Sundorne - 5 minute intervals out to 30 minutes



Cycling to the Quarry & Sundorne - 3 minute intervals out to 15 minutes



So how do they think most people would get to Sundorne?



What can you do ?

Join the march & rally on 2 July 11:00 Pride Hill

Lobby your Shropshire Councillor – Remind them who votes for them

Attend the Cabinet vote on 13 July 12:30 Shirehall

<http://quarrypool.co.uk>

<http://facebook.com/quarrypool>

Twitter @quarry_pool